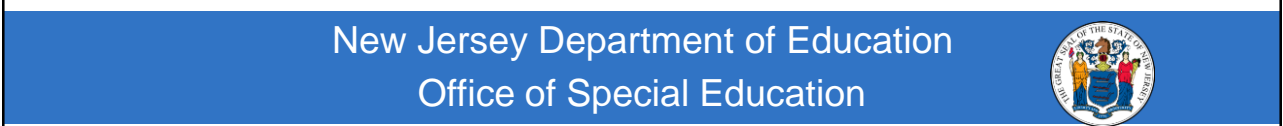


Five Everyday: Active Supervision



Funded by IDEA Part B 2023-2024

Active Supervision



In partnership with NJDOE OSE. Funded by IDEA Part B. (2023-2024)

Why Use Active Supervision at School?

- Active supervision is an engaged style of monitoring a group of students whereby the teacher continuously moves, scans and interacts with students
- Research suggests that active supervision results in decreased occurrences of unwanted behavior (e.g., Haydon & Kroeger, 2016)



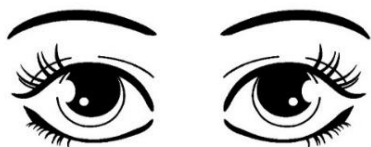
MOVE Around the Space Physical Proximity



- Develop a routine for continually circulating in the space or area
- Distribute proximity and proximity prompts across learners equitably



Continually SCAN Routine Visual Assessment



- Scan the entire space distributing eye contact equitably across students
- Use a neutral or supportive gaze
- Be visually curious to stay alert to signs that students may be having difficulty

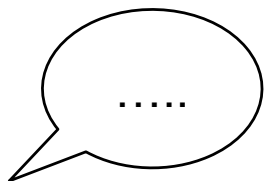


RUTGERS
Robert Wood Johnson
Medical School

THE BOGGS CENTER
ON DEVELOPMENTAL DISABILITIES

In partnership with NJDOE OSE. Funded by IDEA Part B. (2023-2024)

INTERACT Frequently Use the 4:1 Ratio



- Frequently engage students as you move around the space
- 80% of messages are positive (4 positives to every 1 negative)
- Distribute positive messages equitably across students



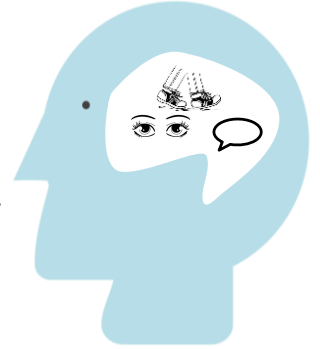
RUTGERS
Robert Wood Johnson
Medical School

THE BOGGS CENTER
ON DEVELOPMENTAL DISABILITIES

In partnership with NJDOE OSE. Funded by IDEA Part B. (2023-2024)

The Active Supervision Mindset

- Pre-correct to set students up for success
- Be attentive to how students are doing
- Connect with students frequently and equitably
- Prevent struggling by offering help early



RUTGERS
Robert Wood Johnson
Medical School

THE BOGGS CENTER
ON DEVELOPMENTAL DISABILITIES

in partnership with NJDOE OSE. Funded by IDEA Part B. (2023-2024)